

## Wood Rod Hanger Design Information — Wood



## Tension Wood Rod Hanger Allowable Loads

Model No.	Rod Size (in.)	Size (in.)	Minimum Edge Distance (in.)	Minimum End Distance (in.)	Minimum Spacing (in.)	Allowable Tension Loads (lb.)			Pipe Size (in.)	
						DF	SP	SPF	UL Approval	FM Approval
RWW25200	¼-20	¼ x 2	¾	2¾	2¾	375	435	310	—	—
RWW37100	¾-16	¼ x 1				155	190	105	—	—
RWW37200	¾-16	¼ x 2				375	435	310	3	—
RWW37212	¾-16	⅝ x 2½		3¼	3¼	605	590	495	4	4

1. Load values are based on full shank penetration into the wood member.
2. Allowable loads may be increased by CD = 1.6 for wind or earthquake.
3. Allowable loads are based on a factor of safety of 5.0.
4. Mechanical and plumbing design codes may prescribe lower allowable loads. Verify with local codes.
5. Allowable loads are based on Douglas Fir-Larch (DF), Southern Pine (SP) and Spruce-Pine-Fir (SPF) wood members having a minimum specific gravity of 0.50, 0.55 and 0.42, respectively.



## Shear Wood Rod Hanger Allowable Loads

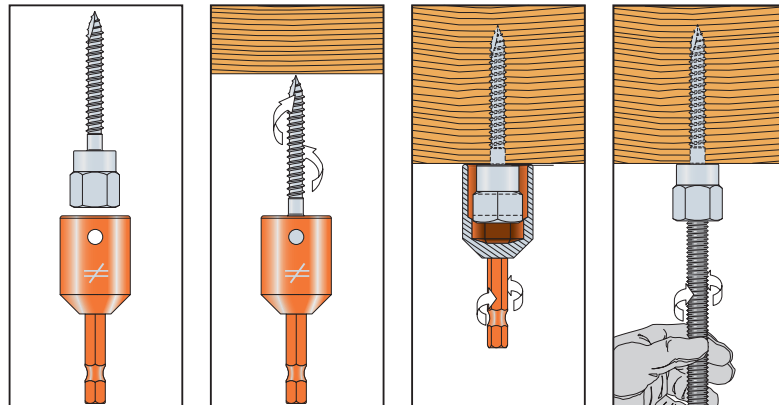
Model No.	Rod Size (in.)	Size (in.)	Minimum Edge Distance (in.)	Minimum End Distance (in.)	Minimum Spacing (in.)	Allowable Shear Loads (lb.)			Pipe Size (in.)
						DF	SP	SPF	UL Approval
RWH25100	¼–20	¼ x 1	1	2¾	2¾	110	135	85	—
RWH37200	¾–16	¼ x 2	2½			240	225	330	3
RWH37212	¾–16	⅝ <sub>16</sub> x 2 ½		3 ¼	3 ¼	230	265	240	3

1. Load values are based on full shank penetration into the wood member.
2. Allowable loads may not be increased for short-term loading.
3. Allowable loads are based on a factor of safety of 5.0.
4. Mechanical and plumbing design codes may prescribe lower allowable loads. Verify with local codes.
5. Allowable loads are based on Douglas Fir-Larch (DF), Southern Pine (SP) and Spruce-Pine-Fir (SPF) wood members having a minimum specific gravity of 0.50, 0.55 and 0.42, respectively.

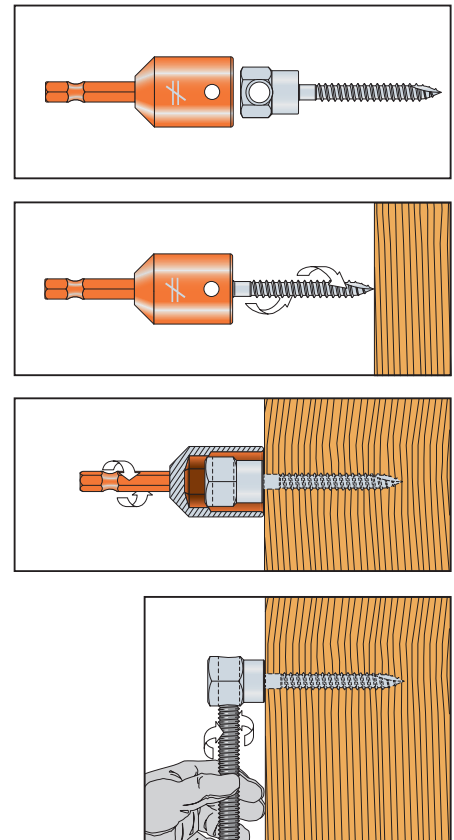
## Installation Sequence

1. Attach RND62 nut driver to a drill.
2. Insert rod hanger into the RND62 nut driver.
3. Using rotation-only mode, drive rod hanger until it contacts the surface. Do not over-tighten. RND62 nut driver will disengage the rod hanger at the appropriate depth to prevent over-driving.
4. Insert threaded rod. Minimum thread engagement should be equal to the nominal diameter of the threaded insert.

## Vertical Wood Rod Hanger



## Horizontal Wood Rod Hanger



\*See p. 14 for an explanation of the load table icons.